



# Cdc37 (phospho Ser13) Polyclonal Antibody

<b>Catalog No</b>	YP-Ab-16622
<b>Isotype</b>	IgG
<b>Reactivity</b>	Human;Mouse;Rat
<b>Applications</b>	WB;IHC;IF;ELISA
<b>Gene Name</b>	CDC37
<b>Protein Name</b>	Hsp90 co-chaperone Cdc37
<b>Immunogen</b>	The antiserum was produced against synthesized peptide derived from human CDC37 around the phosphorylation site of Ser13. AA range:1-50
<b>Specificity</b>	Phospho-Cdc37 (S13) Polyclonal Antibody detects endogenous levels of Cdc37 protein only when phosphorylated at S13.
<b>Formulation</b>	Liquid in PBS containing 50% glycerol, 0.5% BSA and 0.02% sodium azide.
<b>Source</b>	Polyclonal, Rabbit,IgG
<b>Purification</b>	The antibody was affinity-purified from rabbit antiserum by affinity-chromatography using epitope-specific immunogen.
<b>Dilution</b>	WB: 1/500 - 1/2000. IHC: 1/100 - 1/300. ELISA: 1/20000.. IF 1:50-200
<b>Concentration</b>	1 mg/ml
<b>Purity</b>	≥90%
<b>Storage Stability</b>	-20°C/1 year
<b>Synonyms</b>	CDC37; CDC37A; Hsp90 co-chaperone Cdc37; Hsp90 chaperone protein kinase-targeting subunit; p50Cdc37
<b>Observed Band</b>	44kD
<b>Cell Pathway</b>	Cytoplasm .
<b>Tissue Specificity</b>	Lymph,Placenta,
<b>Function</b>	function:Co-chaperone that binds to numerous kinases and promotes their interaction with the Hsp90 complex, resulting in stabilization and promotion of their activity.,PTM:Constitutively sumoylated by UBE21.,similarity:Belongs to the CDC37 family.,subunit:Forms a complex with Hsp90. Interacts with AR, CDK4, CDK6, EIF2AK1 and RB1.,
<b>Background</b>	The protein encoded by this gene is highly similar to Cdc 37, a cell division cycle control protein of <i>Sacchomyces cerevisiae</i> . This protein is a molecular chaperone with specific function in cell signal transduction. It has been shown to form complex with Hsp90 and a variety of protein kinases including CDK4, CDK6, SRC, RAF-1, MOK, as well as eIF2 alpha kinases. It is thought to play a critical role in directing Hsp90 to its target kinases. [provided by RefSeq, Jul 2008],



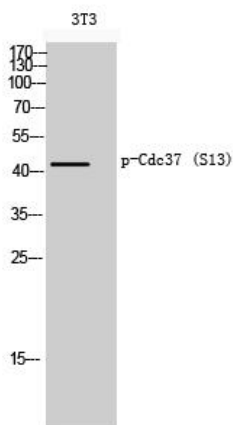
**matters needing attention**

Avoid repeated freezing and thawing!

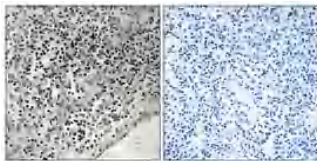
**Usage suggestions**

This product can be used in immunological reaction related experiments. For more information, please consult technical personnel.

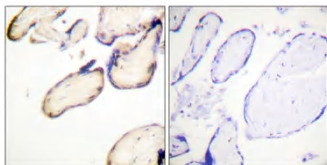
**Products Images**



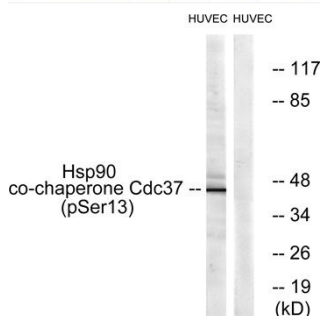
Western Blot analysis of 3T3 cells using Phospho-Cdc37 (S13) Polyclonal Antibody



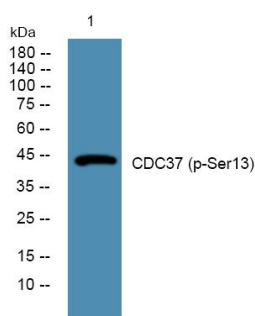
Immunohistochemical analysis of paraffin-embedded Human lung cancer. Antibody was diluted at 1:100(4° overnight). High-pressure and temperature Tris-EDTA, pH8.0 was used for antigen retrieval. Negative control (right) obtained from antibody was pre-absorbed by immunogen peptide.



Immunohistochemistry analysis of paraffin-embedded human placenta, using CDC37 (Phospho-Ser13) Antibody. The picture on the right is blocked with the phospho peptide.



Western blot analysis of lysates from HUVEC cells, using CDC37 (Phospho-Ser13) Antibody. The lane on the right is blocked with the phospho peptide.



Western blot analysis of lysates from K562 cells, primary antibody was diluted at 1:1000, 4° over night